



**BASANT FLOORINGS**  
PRIVATE LTD.



Precast Products

# Kerbs

These are a large range of products – anything and everything in concrete. They are manufactured by the use of high-grade mix of concrete and well vibrated in high quality moulds, which are produced and handled with great care by experienced personnel. All these products are custom made though there are a few standard products. From a smallest concrete element to the biggest is the possibility in this particular range of products.



**BF CCK 01**  
450x450x100mm Thick  
C.C.Kerb Splay



**BF CCK 02**  
610x305x100mm Thick  
C.C.Kerb Splay



**BF CCK 03**  
450x450x100mm Thick  
C.C.Kerb Half Round



**BF CCK 13**  
450x450x100mm Thick  
C.C. Half Round Kerb  
with water Storming



**BF CCK 14**  
450x450x100mm Thick  
C.C.Kerb Half round Kerb  
with Groove



**BF CCK 15**  
600x250x100mm Thick  
CC Kerb one side 10mm  
champer



**BF CCK 04**  
225x200x100mm Thick  
C.C.Kerb Half Batter



**BF CCK 05**  
450x450x100mm Thick  
C.C.Kerb Splay with water Storming



**BF CCK 06**  
610x305x100mm Thick  
C.C.Kerb with water Storming



**BF CCK 16**  
600x250x100mm Thick  
CC Kerb both side 10mm champer



**BF CCK 17**  
500x300x115mm Thick  
CC Kerb Bullnose



**BF CCK 18**  
450x450x80mm Thick  
CC Kerb Round Head



**BF CCK 07**  
450x300x150mm Thick  
C.C.Kerb Half Round



**BF CCK 08**  
300x450x165mm Thick  
C.C.Kerb Half Batter



**BF CCK 09**  
300 X 450 X 165mm  
Corner Kerb



**BF CCK 19**  
450x450x80mm Thick  
CC Kerb Round Head



**BF CCK 20**  
450x450x120mm Thick  
CC Kerb Flat



**BF CCK 21**  
200x200x80mm Thick  
Rumble Strip (Kerb)



**BF CCK 10**  
600x300x150 mm Thick  
C C Kerb with Drain ("L" Shape Kerb)



**BF CCK 11**  
610x305x115mm Thick  
C C Kerb with Drain ("L" Shape Kerb)



**BF CCK 12**  
305x305x100mm Thick  
C.C.Kerb Splay



**BF CCK 22**  
1200mm Length x100mm Thick  
Dropper Kerb, Right

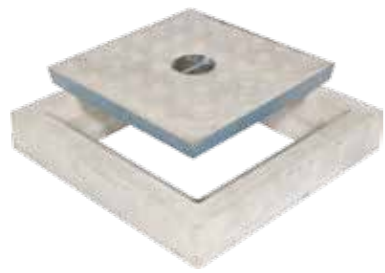


**BF CCK 23**  
1200mm Length x100mm Thick  
Dropper Kerb, Left

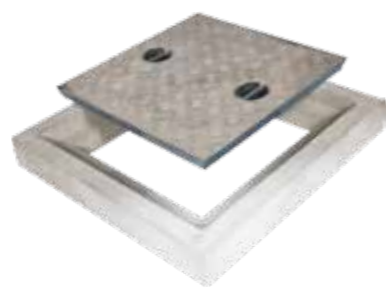
Precast Products

Notes: A. Specification can be customised. B. BFCCK 09 - corner kerb to 300 X 450 X 165mm is reference, we can make this design to all other kerbs.

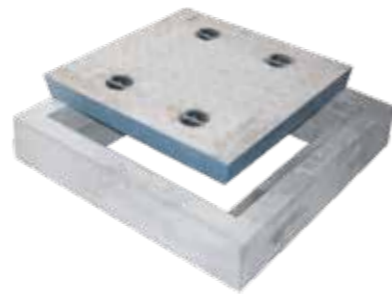
# Manhole Covers



**BF CCM 01**  
Clear Open Area 300 x 300mm  
Manhole Cover & Frame



**BF CCM 02**  
Clear Open Area 450 x 450mm  
Manhole Cover & Frame

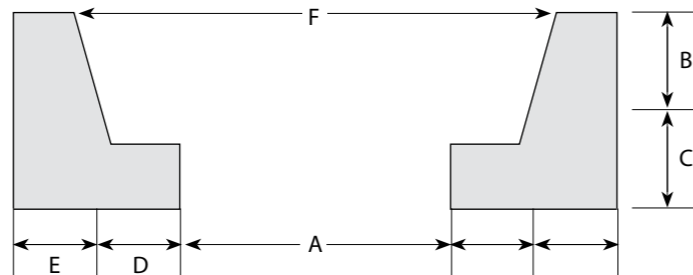


**BF CCM 03**  
Clear Open Area 560 x 560mm  
Manhole Cover & Frame

## MANHOLE COVER AND FRAME

Manhole Cover and Frame is reinforced with Steel Bars, Steel Fiber Size of 0.45mm Dia 25mm Length and dimensions are as follows.

### TECHNICAL DETAILS OF MANHOLE COVER AND FRAME



Sl. No.	Total Outer Size	Clear Open in Frame					Cover Size
		A	B	C	D	E	F
1	480mm	300mm	40mm	40mm	45mm	45mm	390mm
2	660mm	440mm	40mm	50mm	55mm	55mm	550mm
3	900mm	560mm	90mm	75mm	85mm	85mm	735mm

# Gutters



500 x 425 x 380mm, Thick 60mm  
Cover 500 x 425 x 65mm Thick



600 x 300 x 200 mm, Thick 50mm

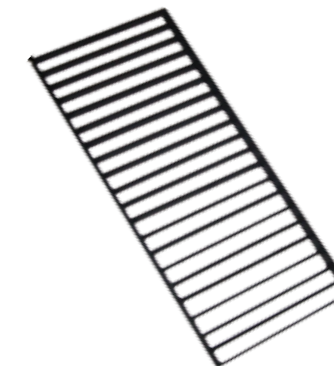
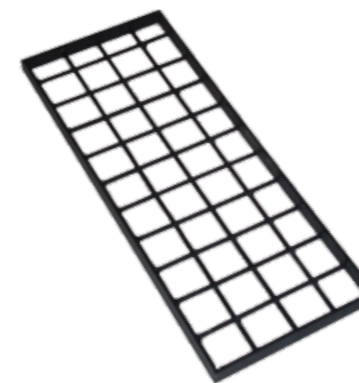


600 x 605 x 450mm, Thick 75mm



600 x 1600 x 1350mm, Thick 100mm

# U Shape Drain Covers



Grills - Size: 600mm length, 235mm width, 35mm Thick  
CC Slab - Size: 600 x 235, Thick 35mm

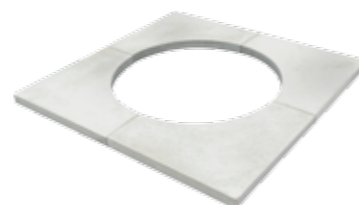
# Special Products



305 x 305mm  
Ventilator Block



405x205x150mm  
Ventilator Block



900x900x40mm  
Tree Guard

# Slabs



**BF CCS 01**  
500x425x65mm Thick  
C.C.Slab



**BF CCS 02**  
690x520x50mm Thick  
C.C.Slab



**BF CCS 03**  
1220x460x75mm Thick  
C.C.Slab



**BF CCS 10**  
795x400x50mm Thick  
CC Slab



**BF CCS 11**  
1300x500x200mm Thick  
CC Slab



**BF CCS 12**  
595x495x75mm Thick  
CC Slab



**BF CCS 04**  
735x400x50mm Thick  
C.C.Slab



**BF CCS 05**  
1390x300x100mm Thick  
C.C.Slab



**BF CCS 06**  
1090x450x100mm Thick  
C.C.Slab



**BF CCS 13**  
1390x300x300mm Thick  
C.C.Slab



**BF CCS 14**  
1090x300x300mm Thick  
C.C.Slab



**BF CCS 15**  
940x300x300mm Thick  
C.C.Slab



**BF CCS 07**  
1220x450x65mm Thick  
Locking C.C.Slab



**BF CCS 08**  
585x450x100mm thick  
C.C.Slab



**BF CCS 09**  
940x450x100mm Thick  
C.C.Slab

**Notes:** Thickness can be customized

- Notes**
- L=length, W=width & T=Thickness
  - Slab's thickness can be supplied from 50 to 100mm
  - On slabs round hole/ slots can be provided as per requirement.



Prajay Villa's project at Hyderabad



A Bungalow at Hubli



EMMAR - HYD



**BASANT FLOORINGS**  
PRIVATE LTD.

**Corporate Office:**  
"Farah Winsford" 2A, 2nd Floor,  
# 133 Infantry Road, Bangalore 560 001, India  
Tel: 0091-80-40897474/ 41232591/92  
Fax: 0091-80-2286 1371  
E-mail: info@basantbetons.com  
www.basantbetons.com

**Hubli:**  
Tel: 0836-2331881, 2310426, M:9845051232  
Email: info.hubli@basantbetons.com  
**Mumbai/Pune/Delhi:**  
M: 09820139015  
Fax: 022- 26764542  
Email: vijaykumar34b@basantbetons.com

**Goa:**

Tel: 0832 – 2236781  
M: 9823037715 / 9890713272  
Email: ajit@basantbetons.com

**Bellary:**

M:9845400710/ 9845117193  
Email: krishna@basantbetons.com

**Hyderabad:**

M: 09845117193  
Email: krishna@basantbetons.com

**Chennai:**

M: 9025067082/ 09845056482  
Email: : jayachandran@basantbetons.com  
yelamali@basantbetons.com

**Coimbatore:**

M: 9845046224  
Email: mudigoudar@basantbetons.com

**Mangalore:** M: 9845053889

Email: raghuramrai@basantbetons.com